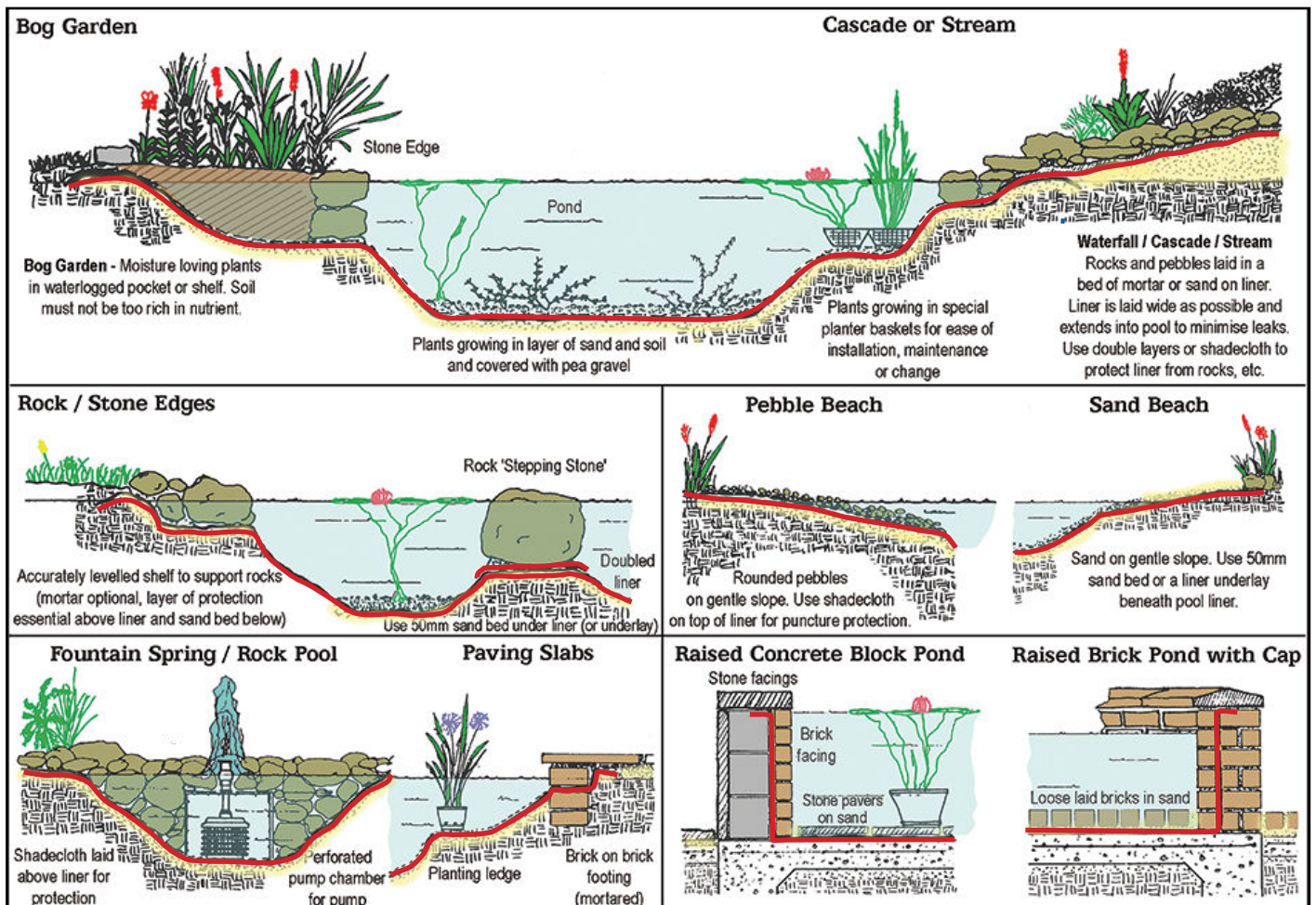


POND LINER

Pond liners are one of the most versatile and adaptable materials for pond construction. Besides providing the freedom to create whatever size and shape pond desired, pond liners also offer numerous logistical benefits as they are easy to transport and store.

However, pond liners do require care and forethought when installing. They can be susceptible to puncture or splits, so care is needed in installation to ensure no sharp objects damage the liner. We highly recommend installing an underlay beneath the liner, and a protective overlay above the liner for long term puncture prevention.

INSTALLATION CONCEPTS AND EDGE TREATMENT METHODS



GENERAL POND LINER GUIDELINES

A selection of common installation and edge methods are shown in the diagram above. Always ensure there are no stress points (or stretch points) and no direct sunlight exposure to the pond liner, as the guarantee does not include degradation due to UV exposure.

POND LINER SIZE FORMULA:

Width: maximum pond width + (2 x max. depth) + (2 x edge allowance)

Length: maximum pond length + (2 x max. depth) + (2 x edge allowance)

EXAMPLE:

For a pond that is 4m x 3m, 0.5m deep at deepest point and 400mm edge allowance:

Width: $3\text{m} + (2 \times 0.5 = 1) + (2 \times 0.4 = 0.8) = 4.8\text{m}$ wide

Length: $4\text{m} + (2 \times 0.5 = 1) + (2 \times 0.4 = 0.8) = 5.8\text{m}$ long

Therefore, you would order a pond liner 5m x 6m (liner is sold in whole metres only) and underlay 2m wide x 15m (to be cut into 3 pieces, each 5m long).

JOINING LINER

Liners can be joined on site with tape or glue. This requires a reasonable level of skill as an unsatisfactory job can easily result in cracks / leaks in the liner. Factory welds are recommended for submerged joints and long seams. Folds and creases are preferable to cutting and joining.

POND LINER - SINGLE PLY PVC LINER



High quality European-made PVC pond liner. Flexible and easy to install, long lasting, versatile material. May be joined to make much larger pieces, either with tape or glue or factory welding (see next page). Please read previous page for installation tips.

Warranty does not cover breakdown due to UV, so ensure the liner is protected from sunlight.

*Note: All roll sizes are nominal. **Cut to length pond liners are in whole metres only.

Top quality flexible frost resistant PVC liner



CODE	DESCRIPTION*
14100	REEFE 0.5mm cut-to-length** per m ²
14102	2m x 50m roll
14104	4m x 25m roll
14106	6m x 25m roll
14108	8m x 25m roll
14110	10m x 20m roll
14201	REEFE 0.8mm cut-to-length** per m ²
14204	4m x 25m roll
14206	6m x 25m roll
14208	8m x 25m roll

POND LINER - PRE-PACKS



High quality European-made PVC pond liner. Flexible and easy to install, long lasting, versatile material. Liner pre-packs can be joined to make much larger pieces, either with tape or glue, or factory welding. Warranty does not cover breakdown due to UV, so ensure the liner is protected from direct sunlight.

Top quality flexible frost resistant PVC liner



CODE	DESCRIPTION	SIZE
14501	Pond Liner Pre Cut Packs PVC 0.5mm	2.0m x 3.0m
14505		3.0m x 4.0m
14507		4.0m x 5.0m
14509		4.0m x 6.0m
14511		5.0m x 6.0m
14513		6.0m x 7.0m
14515		6.0m x 8.0m

POND LINER UNDERLAY



This high quality synthetic fabric underlay will protect the pond liner from cuts and leaks from sharp objects, extending the life of the pond and making installation significantly easier. A worthwhile investment!

Top quality, non-rotting synthetic material.



CODE	DESCRIPTION	SIZE	SOLD AS
14400	High Density Pond Liner Underlay Fabric 200g/m ²	2m wide	Per m ²
14403		2 x 5m	Prepack
14451		2m x 50m	Roll