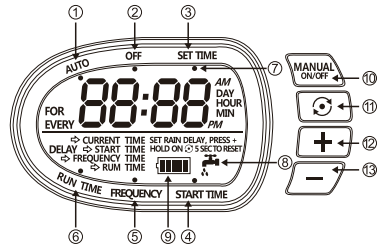


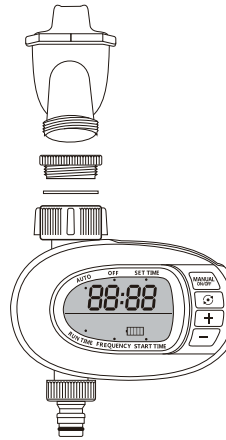
TORO.

Electronic Solar Tap Timer

User Manual
1011673

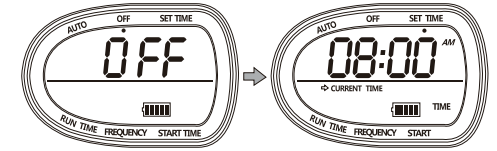


- | | |
|--------------------|-------------------------|
| 1. Auto | 8. Watering Flow / Stop |
| 2. Off | 9. Battery Indicator |
| 3. Set Time | 10. Manual Button |
| 4. Start Time | 11. Select Button |
| 5. Frequency | 12. Increase Button |
| 6. Run Time | 13. Decrease Button |
| 7. Indicator Point | |



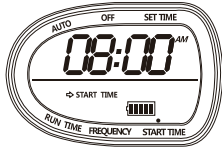
Use thread adaptor if necessary and connect to water tap. Leave water tap opened.

If this timer without any power, please put it under the sunshine for 30mins then start to set up and use it.



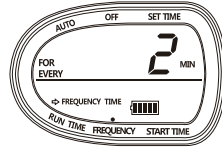
Diagr. 1

- Before setting up the program, depress for 5 sec to reset. To set up current time into "SET TIME" mode (see diagram 1) simply depress the button or to select set what the current time.



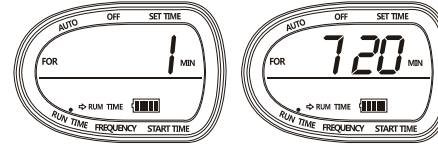
Diagr. 2

- Depress into the "START TIME" mode (see diagram 2) to set up an initial time you want to start the first watering cycle.



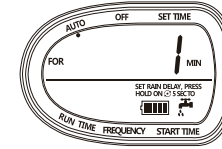
Diagr. 3

- Depress into the "FREQUENCY" mode (see diagram 3) to set up the duration of each "FREQUENCY" how often you want for watering.
When "FREQUENCY" mode shows, depress button or for duration setting from 2 minute to 7 days



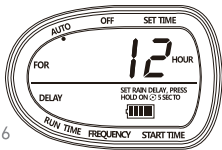
Diagr. 4

- Depress into the "RUN TIME" mode (see diagram 4) to set up the duration of "RUN TIME" (how long you want to water) where "RUN TIME" model shows, depress button or for duration setting from 1 minute to 720 minutes. (please note that run time cannot be longer than frequency).



Diagr. 5

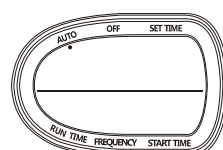
- Depress into the "AUTO" mode (see diagram 5) to start the program for watering.
- A. Manual Watering Program Setting:**
- When in "AUTO" mode, depress the Button. The Tap icon will show in the screen. Use the or buttons to set the manual watering duration from 1 minute to 720



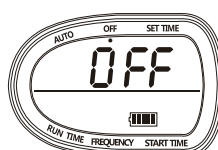
Diagr. 6

B. Rain Stop Program Setting:

- When in "AUTO" mode, depress button to activate Rain Stop. Rain Stop pauses the the automatic programming of the timer for a period of time incase of rain. You can use the or button to change the time from 12 hours to 7 days.
If you want to cancel the Rain Stop function, depredd the button until OFF is displayed.



Diagr. 7



Diagr. 8

C. Power Saving Feature

- If there is no changes to the programming for over 5 minutes, the LCD panel will turn off (see diagram 7). This helps to conserve power.
- During periods where the timer is not in use for long lengths of time, it is recommended that you turn the timer to the OFF mode. This will extend the usable life of the battery.